



AGENCY

The Reality

A report of child abuse is made every 10 seconds

5 children die every day from abuse and neglect

33% of reported child abuse cases involve children under age 5



How We Prevent Child Abuse



Strengthen Families & Communities

Prevention Programs & Services

- **Family Resource Centers**
Family friendly, community-based collaboratives with the capacity to provide on-site access to comprehensive prevention and treatment services
- **Focus on Families with children birth to five years**
Child development, parent education, home visitation, healthy eating, infant health, parents' and children's support groups
- **Family Support**
Address the specific needs of refugee children, immigrant families, fathers, relative caregivers, childcare, youth after school and linkage to local community resources

Behavioral Health Services

Targets young children, adolescents and their families with the goal of eliminating psychiatric conditions that impair the child's functioning

- **Individual and Family Therapy, Parent Education via Outpatient Services, Wraparound and Day Treatment Program**
- **FSP** (Full-Service Partnership)
- **IFCCS** (Intensive Field Capable Clinical Services)
- **MAT** (Multidisciplinary Assessment Team)
- **TBS** (Therapeutic Behavioral Services)

Family Foster Care & Adoption

- **Adoption Promotion and Support Services**
- **Foster Care and Foster-Adopt**
- **Private Adoption Home Study Program**
- **Relative Support Services**
- **Resource Parent Recruitment and Training**

Place-Based Strategies

Develop best practices to transform systems within and among organizations that improve community outcomes that are scalable and sustainable

- **Antelope Valley Resource Infusion**
- **Best Start – Antelope Valley**
- **Los Angeles Community Child Abuse Councils**
• lachildabusecouncils.org
- **MCI Network – Los Angeles** • themcinetwork.org
- **Network Anaheim**
- **Population Change Learning Community**



Help Other Organizations

Technical Assistance

Strategies TA - support community-driven networks throughout California • strategiesca.org



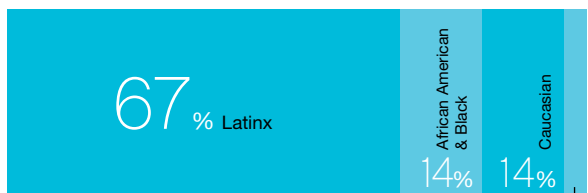
Advocate for Sound Public Policy

Lead a collective effort to promote child well-being and reduce entry into the Child Welfare System. Impacts take place at the federal, state and local levels, providing trusted input to key decision-makers and mobilizing networks to engage in the policymaking process.

Agency

Client Profile

90.7 percent of families are low income



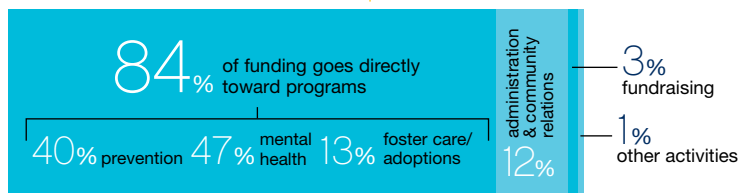
4% Asian American, Pacific Islanders & others

Financial Overview

Fiscal Year Budget 2022/2023

\$53.2 million annual operating budget

\$4.85 million in private donations supporting our programs



Support from philanthropy helps us to leverage additional funding from public sources.

Children's Bureau is...

- One of the largest investors in child abuse prevention in the country.
- A credible and innovative child and family well-being leader.
- Leveraging comprehensive strategies to revolutionize the way child abuse and neglect are addressed.
- Strengthening the capacity of an entire area to build protective and supportive communities where children thrive.
- Promoting an employee culture of wellness and importance of diversity, equity, inclusion and belonging.
- Offering a return on investment that saves money and lives.



A Proud History

- Founded in 1904
- Vital partner in starting the Community Chest, now the United Way
- Key role in establishing the USC School of Social Work

Children and Families Reached

49,400 children and parents helped each year

Serving children birth through age 21, with special emphasis on children **birth to 5**

Volunteers and Staff

14 Agency Board of Directors members | 34 Board of Trustees members

5 Philanthropy Committees | 450 Employees

vision
Children thriving in strong families and communities

mission
Protecting vulnerable children through prevention, treatment, and advocacy

Parents Who Participate in Our Programs:

- GAIN** confidence in themselves and their ability to parent.
 - DEVELOP** strong social connections and relationships with others in the community.
 - BUILD** a network of support and increase each other's potential that benefits their families and neighborhoods.
- These factors help reduce the likelihood of abuse and neglect.*

Headquarters: 1910 Magnolia Avenue, Los Angeles, CA 90007 | 888.255.4543

Community sites in Antelope Valley, Metro Los Angeles and Orange County.
Office hours vary per site. Virtual services available. Call for more information.



Children's Bureau is a Community Impact Provider of United Way of Greater Los Angeles.



LA County Child Abuse Prevention Councils



Learn more...



all4kids.org

#BeTheReason

